



# NEW CREDENTIAL FOR EXECUTIVES

## CERTIFIED ALCOHOL AND DRUG TREATMENT EXECUTIVE - CTE

### Training May 4–7, 2021

May 4, 2021

8 AM - 12:30 PM	<i>Human Resources:</i> The HR course provides basic and essential information for participant to develop or improve the management of the personnel department within their program.	Devon Wayt	4.5 Hours
1:00 PM - 5:30 PM	<i>Leadership:</i> This course will teach participants leadership and networking skills that will assist them in achieving further goals, such as leading retreats and conferences, developing networking groups, training and support activities.	Kristina Padilla	4.5 Hours

May 5, 2021

8 AM - 12:30 PM	<i>Board Interactions:</i> This course provides training on how a manager/executive works within a treatment setting that includes a Board of Directors.	Jen Carvalho	4.5 Hours
1:00 PM - 5:30 PM	<i>Fiscal Responsibility:</i> This courses rationale is to provide instruction to participants that will help them to establish a clear financial accountability framework for the organization, enabling the board, Chief Executive Officer (CEO), Chief Financial Officer (CFO), management team and staff to understand their fiscal responsibility and accountability.	Tim Sinnott	4.5 Hours

May 6, 2021

8 AM - 12:30 PM	<i>Introduction to SUD Treatment and Treatment Services:</i> This course provides participants with a general overview of the history of SUD Treatment.	Rose Wheeler	4.5 Hours
1:00 PM - 5:30 PM	<i>Advocacy:</i> Participants will learn to differentiate between the types and levels of advocacy.	Sherry Daley	4.5 Hours

May 7, 2021

8 AM - 12:30 PM	<i>Policies and Adherence:</i> This course provides participants an opportunity to learn how to form ideas for policies, develop and implement policies as well as ensure self and staff adherence to such policies.	Lori Newman	4.5 Hours
1:00 PM - 5:30 PM	<i>Professional Conduct:</i> This course covers the professional conduct of the CEO/Manager of a program as well as staff and the board.	Lori Newman	4.5 Hours

*Important: This is the required education only. A separate application and fees for certification are required to become certified. For details on certification requirements, visit [www.ccappcredentialing.org](http://www.ccappcredentialing.org)*

#### Training Price Schedule

CCAPP Program Members	\$1250
Non-Members	\$1550

Fees are non-refundable

#### Training Location

Virtual Live Online

Register online at [www.ccappconferences.com/shop](http://www.ccappconferences.com/shop)

Questions? [admin@ccapp.us](mailto:admin@ccapp.us)

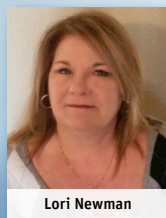
800-564-5927



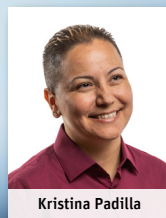
Jen Carvalho



Sherry Daley



Lori Newman



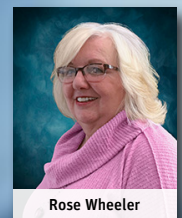
Kristina Padilla



Tim Sinnott



Devon Wayt



Rose Wheeler